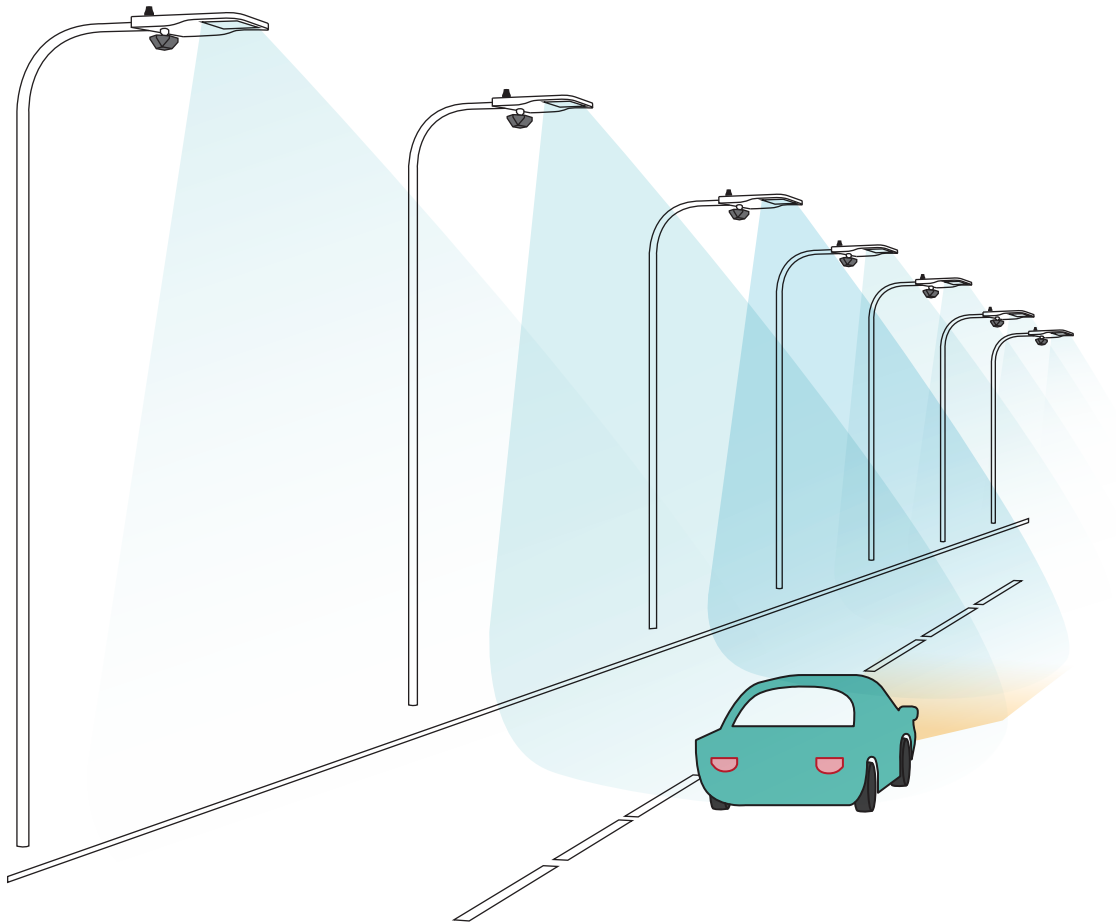
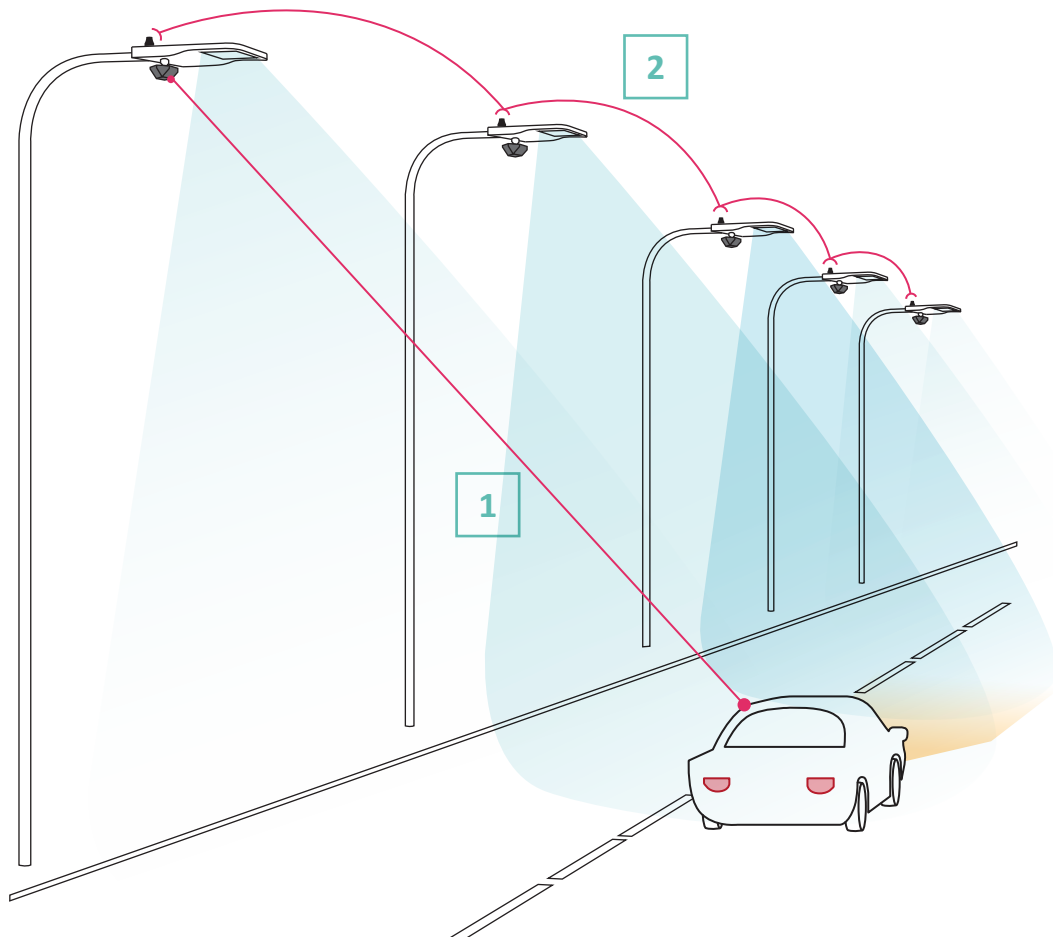


Street lighting control system with radar type sensors



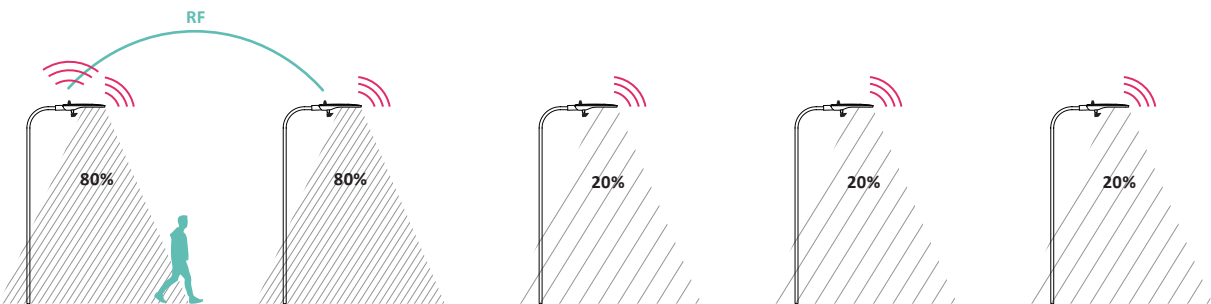
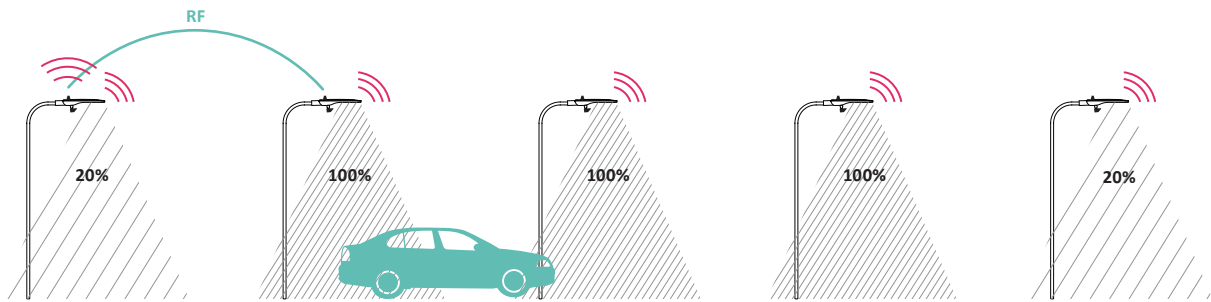
Intelligent motion sensing control system that automatically activates when a car or pedestrian is noticed in the area. If there is no activity in the area, the light is automatically adjusted to an optimized minimum light level. Expansion of functionality options using the multifunction radar technology.

Citintelly
LIGHT FOR THE SMART CITY



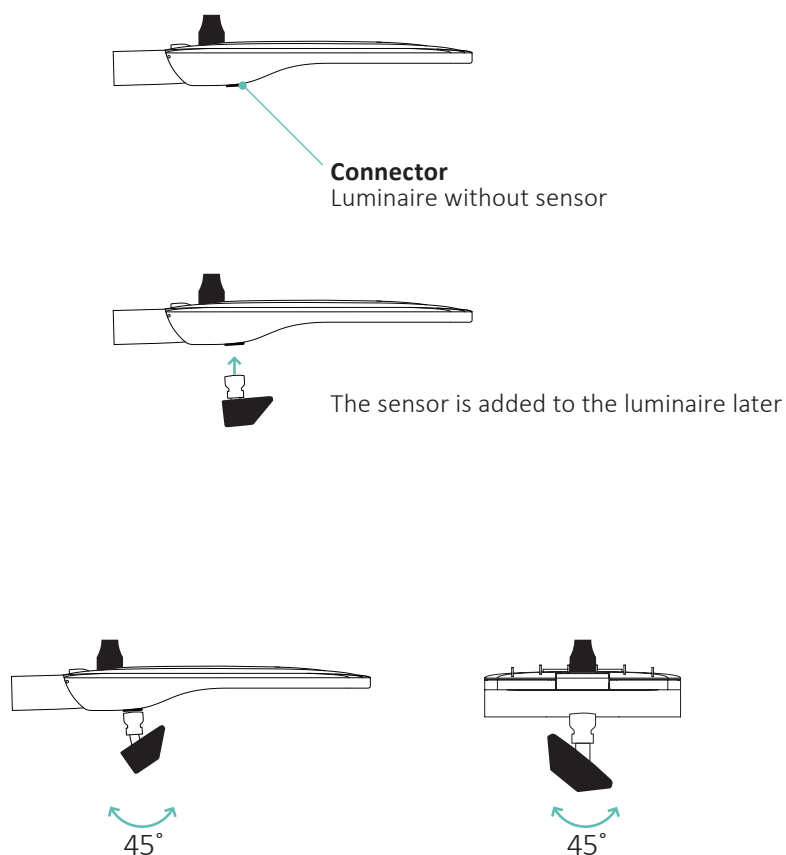
- 1** Detects motion, speed and direction of vehicle
- 2** Forwards information to next luminators with command to turn on light
- 3** **Additional functionality** which is counting vehicles and pedestrians

Light level adjustment according to vehicle and pedestrian traffic flow



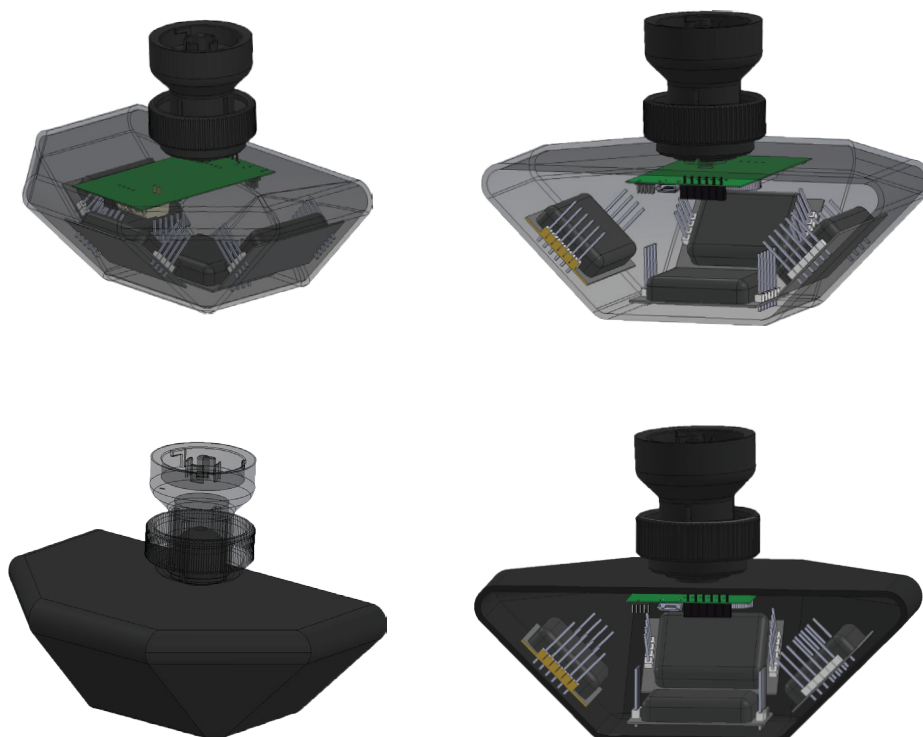
Benefits

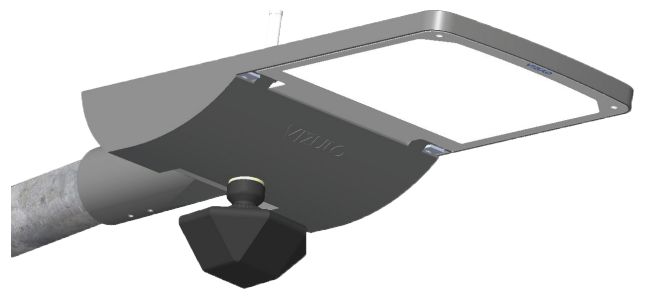
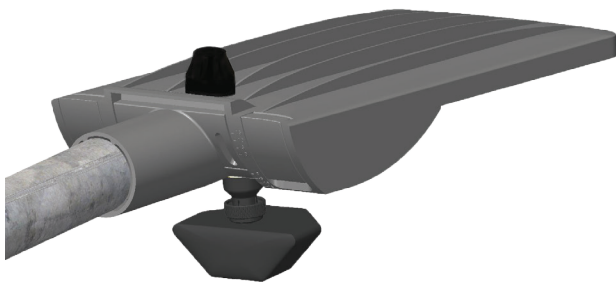
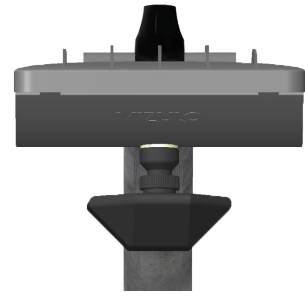
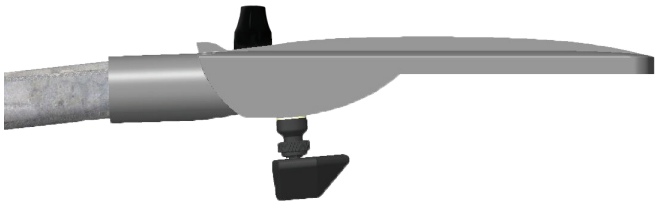
- 1 Significant energy savings - light is provided only where it is needed
- 2 The sensor is installed in the light source and there is no need to drill holes on the base for attachment (as a result of loss of the stake and guarantee compliance with standard)
- 3 Additional functionality which is counting vehicles and pedestrians



Sensor technical parameters

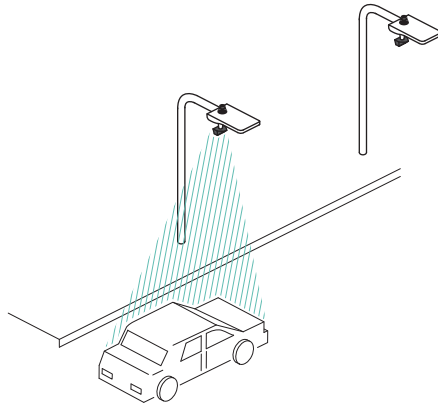
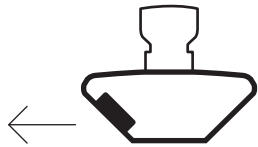
Tracked data	Movement, direction, distance, speed, presence
Operating temperature	-30°C to +60°C
Capture distance	Up to 75m
Operating angle	45° horizontally and 38° vertically
Protection level	IP66
Management	Both local and remote
Operation	Autonomous, regardless of the external internet network



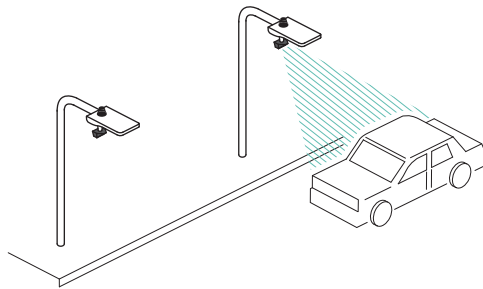
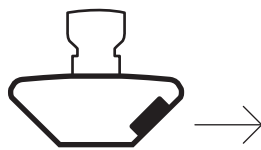


Sensor options / versions

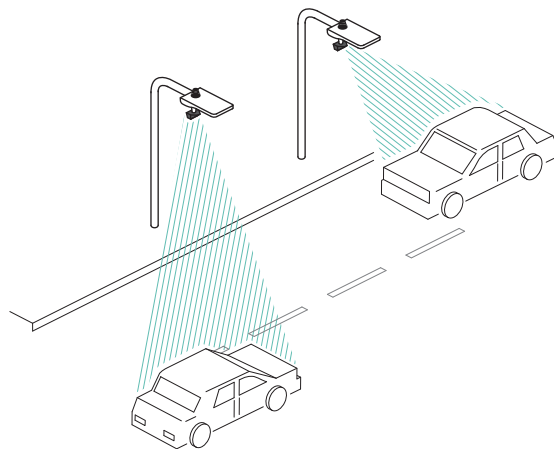
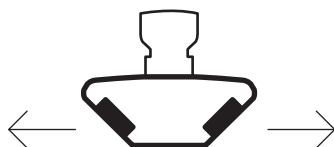
1 Sensor direction left



2 Sensor direction right



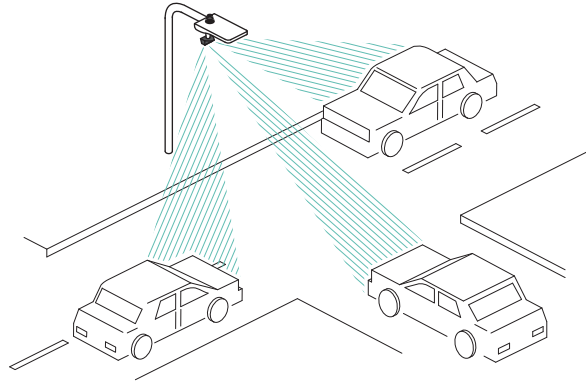
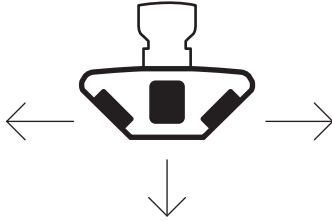
3 Sensor direction left and right



Sensor options / versions

4

Sensor direction right,
left and forward



5

Car counting
Sensor direction down

